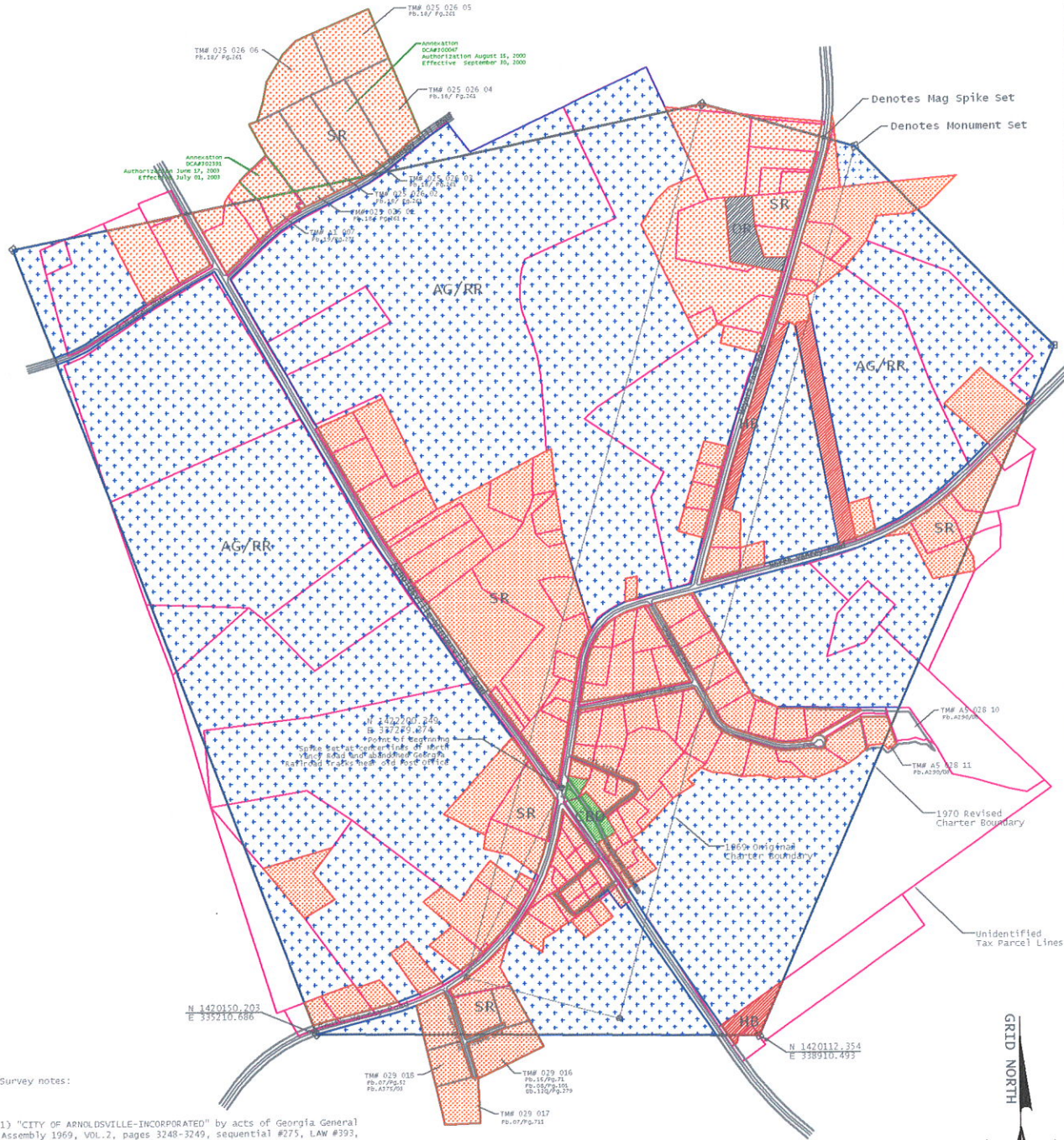


# City of Arnoldsville Oglethorpe County, Georgia January, 2018 Zoning Map



**Survey notes:**

- 1) "CITY OF ARNOLDSVILLE-INCORPORATED" by acts of Georgia General Assembly 1969, VOL.2, pages 3248-3249, sequential #275, LAW #393, determined original city boundaries. "CITY OF ARNOLDSVILLE-CORPORATE LIMITS" by acts of Georgia General Assembly 1970, VOL.2, pages 3285-3286, sequential #349, LAW# 1224, determined revised and additional corporate limits.
- 2) Survey for "CITY OF ARNOLDSVILLE" dated January 05, 1970, prepared by James M. Paul, Oglethorpe County Surveyor, depicts both charters, and references plat as being drawn from Oglethorpe County Tax Maps BU-16 and BU-25.
- 3) In my opinion, the Corporate Limits of Arnoldsville were drawn upon Tax Maps BU-16 and BU-25 with True North Orientation, using a protractor and an engineer's scale, and served as a template for James M. Paul's plat.
- 4) Georgia East Zone (NAD83) State Plane Coordinates were transferred to site from NGS published monuments BV 029 207 (PID DF2018) and BV 109 210 (PID DF2021) by static GPS. Streets and property corners' locations were collected with localization of the static control points by Network RTK GPS. Monuments and witness points were set by a combination of base/rover RTK GPS and Robotic Total Station.
- 5) Identified Tax Parcels were computed from sample field collection and recorded survey plats. Unidentified TAX Parcels are taken from current tax mapping, and do not reflect field run surveys.

Surveyor:  
 Tim Wilkes RLS 2616 LLC  
 64 Wood Bine Lane  
 Crawford, Georgia 30630  
 Ph. (706) 202-9389  
 Email- solosurvey@windstream.net

**Zoning Districts Designations:**

- OR-Office Residential
- HB-Highway Business (conditional)
- CBD-Central Business
- SR-Suburban Residential
- AG/RR-Agricultural/Rural Residential

